

Swishing Party



Why spend when you can swap?

De-clutter your drawers, revamp your wardrobe & transform unwanted clothes into cash!



THE NOAH'S ARK APPEAL

OFFICIAL CHARITY OF THE CHILDREN'S HOSPITAL FOR WALES

SWISH FOR THE NOAH'S ARK APPEAL

What is Swishing?

Swishing is an increasingly popular trend where friends, acquaintances and even strangers get together to swap clothes, shoes and accessories. The aim is to bring as many unwanted items as you can gather. The clothes are put on display and once the swish is declared open, everyone is free to look, try on and keep the items they fancy. Setting a limit on the number of items guests can take away will ensure that lots of clothes are donated to the Noah's Ark Appeal which can be turned into cash for the Children's Hospital for Wales.

Why Swish?

Not only is Swishing a great way to revamp your wardrobe and update your style for nothing, it's also social, ethical and very eco-friendly. In the UK 900,000 tonnes of shoes and clothing are thrown away every year, but by holding a Swishing Party and recycling clothes you will help reduce the amount of textile waste which ends up in landfills. You will also be helping us raise our target of £7m to pay for an 'open MRI scanner', a hydrotherapy pool and other vital equipment for the Children's Hospital for Wales.

What happens at a Swishing Party?

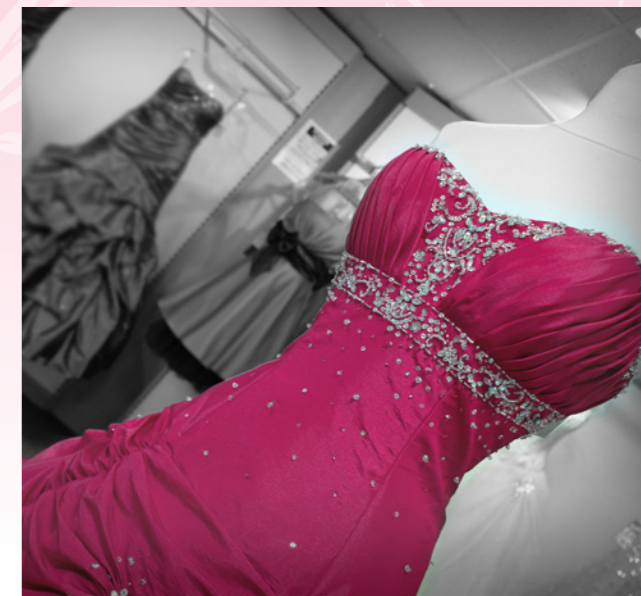
Swishing Parties can be held anywhere, at home, at work, at the community hall, in a hotel and therefore may vary hugely. Generally though, they are social events which involve guests coming together, munching on nibbles, sipping on a glass of wine or two and swapping unwanted items for something that may actually get the chance to venture out of your wardrobe.



HOW DO I ORGANISE A SWISHING PARTY?

There are 5 simple steps to organising a Swishing Party:

1. Choose a date, venue and invite your friends and acquaintances to the event. Publicise your party if it's appropriate to what you are doing.
2. The aim is for everyone to bring as many items of good quality unwanted clothing as possible. This can include clothing, shoes and accessories.
3. Lay out the clothes using rails, chairs, clothes horses, make-shift washing lines or whatever you can find to display the clothes. Ask guests to bring hangers! No-one can claim any items before the swish officially opens.
4. Once everyone has arrived, explain the rules of your swishing party to your guests and countdown to the start of the Swish.
5. Once the swish is open guests may choose a few items that tickle their fancy but remember the most important rule is to donate as many bags of clothes as possible to the Noah's Ark Appeal at the end of the swish. Unwanted clothes can be transformed into cash which will help the Noah's Ark Appeal raise their target of £7m to fund vital equipment for Phase Two of the Children's Hospital for Wales.



TOP TIPS

Swishing Parties at home

- Suitable for 10-20 guests depending on the space you have at your house
- Set up a room with a few mirrors where guests can try on any items they fancy.
- A few nibbles wouldn't go amiss.

Swishing Party at a local venue

- Consider using a community hall/ local hotel as a venue if you intend inviting more than 20 guests. A local hotel may be able to offer special prices on selected drinks for the evening.
- Do you need to sell tickets to cover the costs of holding the Swishing Party?
- Invite local businesses to bring a stall for the evening for a small fee. This is a great opportunity for them to promote their business; it will keep guests entertained before the Swish opens. The following sectors would be a good place to start: health & beauty, retail, food & drink, clothes alteration and repair.
- It may be necessary to limit the number of items guests can bring for the swish i.e. maximum of 20 items. If guests have more they'd like to bring, suggest they bring a bag of clothes which can be donated directly to the Noah's Ark Appeal with the leftover clothes from the swish.
- Ask guests to bring their items prior to it so you have a chance to organise them before the Party begins. Remember to ask them to bring hangers.
- Give guests a ticket which has the number of items they donated to the swish on it, this number is also the maximum number of items they are allowed to take away with them.
- For highly desired items you may want to have a draw to avoid any cat fights!
- Other ideas to make sure it's a jam-packed evening: hold a raffle, best dressed competition, goodie bags - ask local companies to donate prizes.
- Have a stylist on hand to advise Swishers.
- Maybe some music to get everyone in the shopping mood!



www.noahs-ark-appeal.org | enquiries@noahs-ark-appeal.org | 029 2033 5016

The Noah's Ark Appeal, Cardiff Royal Infirmary, Newport Road, CF24 0SZ

Registered Charity Number 1069485